



Global Spatial Data and Information Dissemination Initiatives in Health

Global Spatial Data and Information User Workshop
21-23 September 2004
New - York

Content of the presentation

- **Global Spatial Data Initiatives**
 - **Container**
 - **Content**
- **Information Dissemination Initiatives**
- **Conclusions**

➔ *Sub national data*

Global Spatial Data Initiatives

- **Container**

- Health Facilities

- => Big gaps existing

- Grid cells

- => Modelling

- Health Districts

- => Concerns less than 100 countries

- => No systematic process being put in place

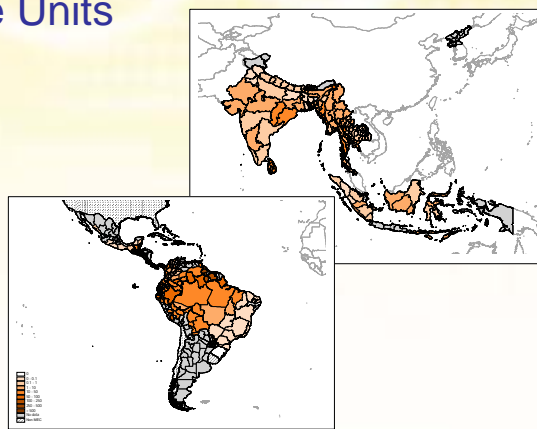
- Administrative Units

- => Second Administrative Level Boundaries (SALB)

Global Spatial Data Initiatives

- **Content**

- Administrative Units

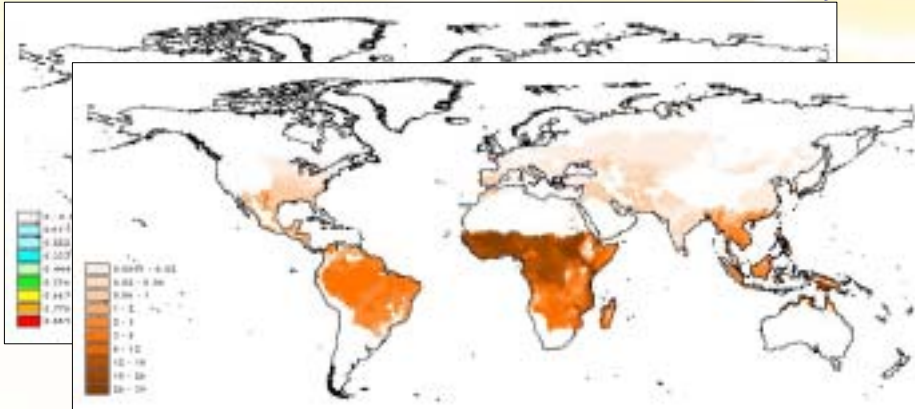


Multi-year mean Annual Parasite Incidence (API)
done by Oxford U. and commissioned by WHO/RBM

Global Spatial Data Initiatives

- Content
- Grid cell

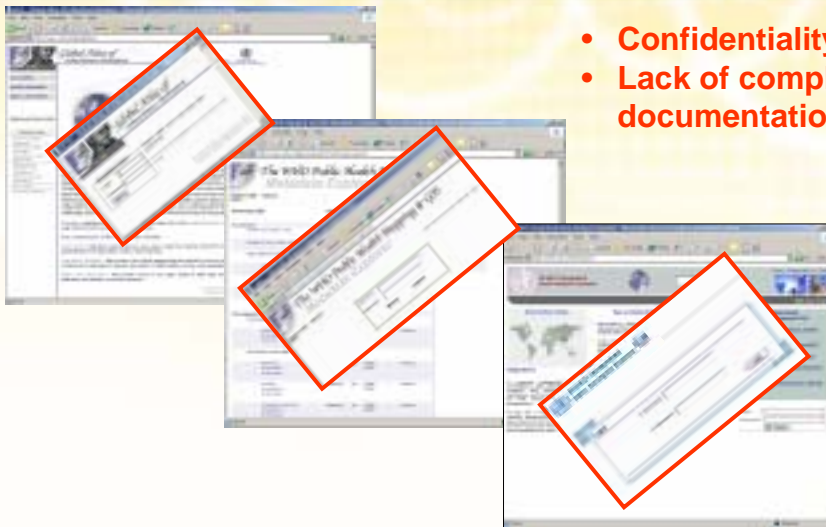
MARA model of climate suitability



Index of malaria transmission stability

Information Dissemination Initiatives

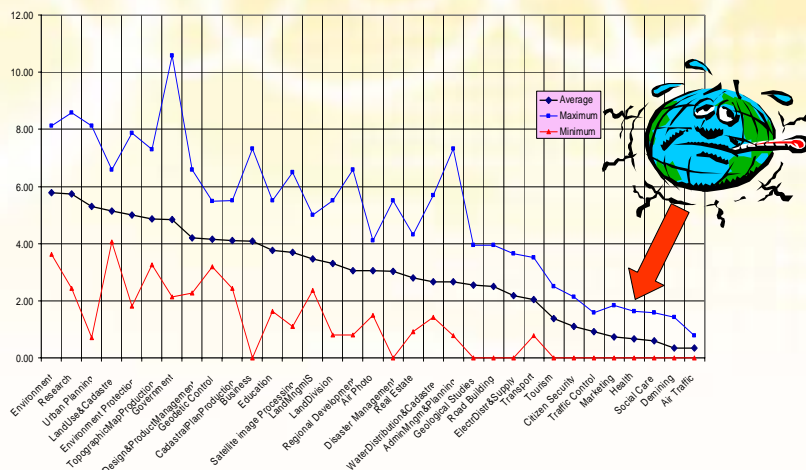
- Confidentiality
- Lack of complete documentation



Conclusion

- Work needs to be done to:
 - Improve the availability of Health districts extension and health facilities location databases
 - Provide consistent global database of sub national distribution estimates
 - Allow access to a larger number of public health related data (at least to the metadata records)

Conclusion



Distribution of the number of GIS documents that have been found by sector of activity for the South East European countries (GISEE, 2001)

Thank You !



**Dr Steeve Ebener
WHO/EIP/KMS
20, Av Appia
1211 Geneva 27
Switzerland
Tel.: +41 22 791.47.44
Fax.: +41 22 791.43.28
Email: ebeners@who.int**