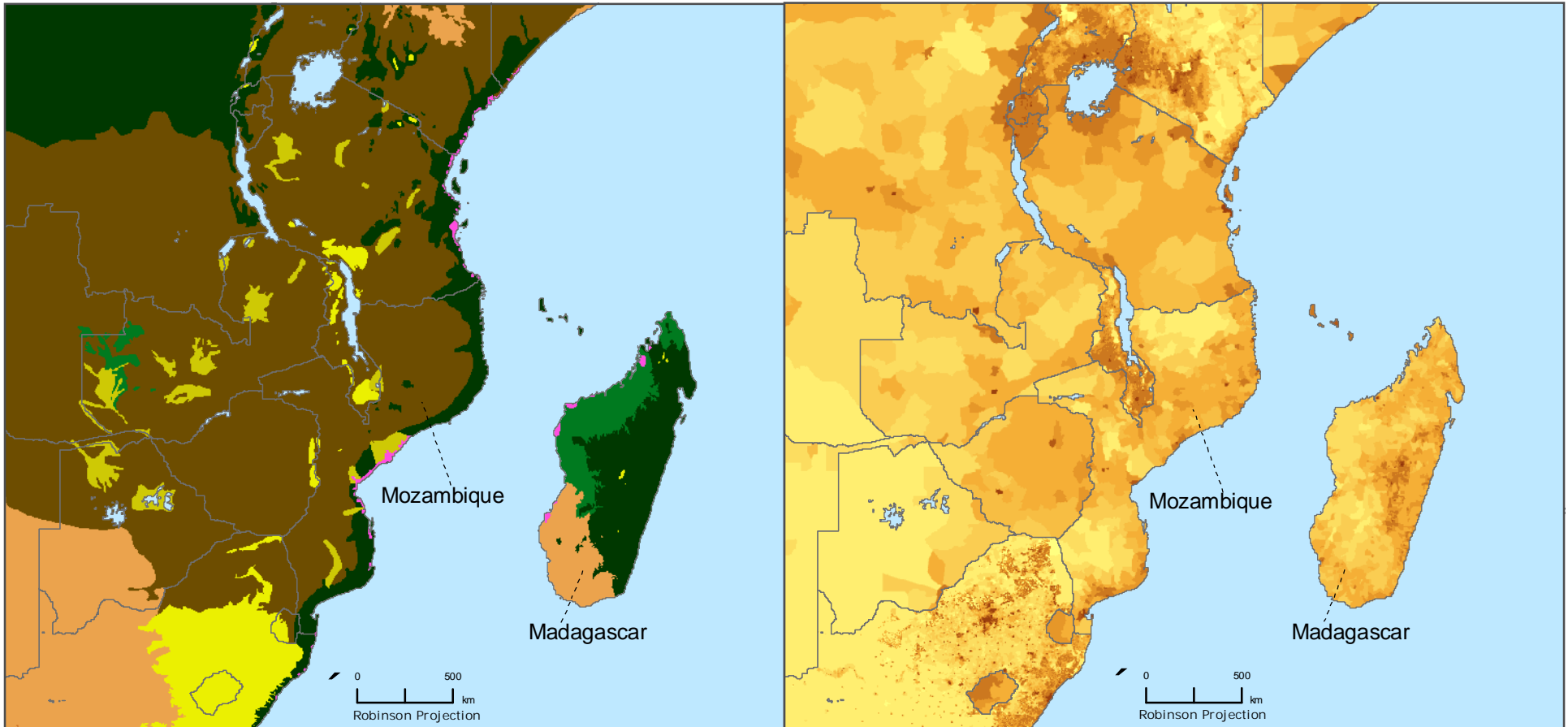


# Generalized Climate Zones \ GPW v3 Population Density

Southeastern Africa & Madagascar



## Biomes

- Tropical, Subtropical Moist Broadleaf Forest
- Tropical, Subtropical Dry Broadleaf Forest
- Tropical, Subtropical Conifer Forest
- Temperate Broadleaf, Mixed Forest
- Temperate Conifer Forest
- Boreal Forest\Taiga
- Tropical, Subtropical Grasslands, Savannas, Shrublands
- Temperate Grasslands, Savannas, Shrublands
- Flooded Grasslands, Savannas
- Montane Grasslands, Shrublands
- Tundra
- Mediterranean Forest, Woodlands, Scrub
- Deserts, Xeric Shrublands
- Mangroves



## Population Density 2000

- |  |  |
|--|--|
| <span style="display: inline-block; width: 15px; height: 15px; background-color: #FFFF00; margin-right: 5px;"></span> 0 Persons \ Sq.Km      | <span style="display: inline-block; width: 15px; height: 15px; background-color: #8B4513; margin-right: 5px;"></span> 50- 100 Persons \ Sq.Km      |
| <span style="display: inline-block; width: 15px; height: 15px; background-color: #FFD700; margin-right: 5px;"></span> 0-2 Persons \ Sq.Km    | <span style="display: inline-block; width: 15px; height: 15px; background-color: #8B4513; margin-right: 5px;"></span> 100- 500 Persons \ Sq.Km     |
| <span style="display: inline-block; width: 15px; height: 15px; background-color: #FFD700; margin-right: 5px;"></span> 2-5 Persons \ Sq.Km    | <span style="display: inline-block; width: 15px; height: 15px; background-color: #8B4513; margin-right: 5px;"></span> 500- 1000 Persons \ Sq.Km    |
| <span style="display: inline-block; width: 15px; height: 15px; background-color: #FFD700; margin-right: 5px;"></span> 5-10 Persons \ Sq.Km   | <span style="display: inline-block; width: 15px; height: 15px; background-color: #8B4513; margin-right: 5px;"></span> 1000- 10000 Persons \ Sq.Km  |
| <span style="display: inline-block; width: 15px; height: 15px; background-color: #FFD700; margin-right: 5px;"></span> 10-15 Persons \ Sq.Km  | <span style="display: inline-block; width: 15px; height: 15px; background-color: #8B4513; margin-right: 5px;"></span> 10000- 50000 Persons \ Sq.Km |
| <span style="display: inline-block; width: 15px; height: 15px; background-color: #FFD700; margin-right: 5px;"></span> 15- 50 Persons \ Sq.Km | <span style="display: inline-block; width: 15px; height: 15px; background-color: #8B4513; margin-right: 5px;"></span> > 50000 Persons \ Sq.Km      |



Copyright 2007. The Trustees of Columbia University in the City of New York.  
 Source: Center for International Earth Science Information Network (CIESIN).  
 Columbia University. Population, Landscape, and Climate Estimates (PLACE).  
 Further information available at: <http://sedac.ciesin.columbia.edu/place/>



Publish Date: 03/19/07



This document is licensed under a  
 Creative Commons 2.5 Attribution License  
<http://creativecommons.org/licenses/by/2.5/>