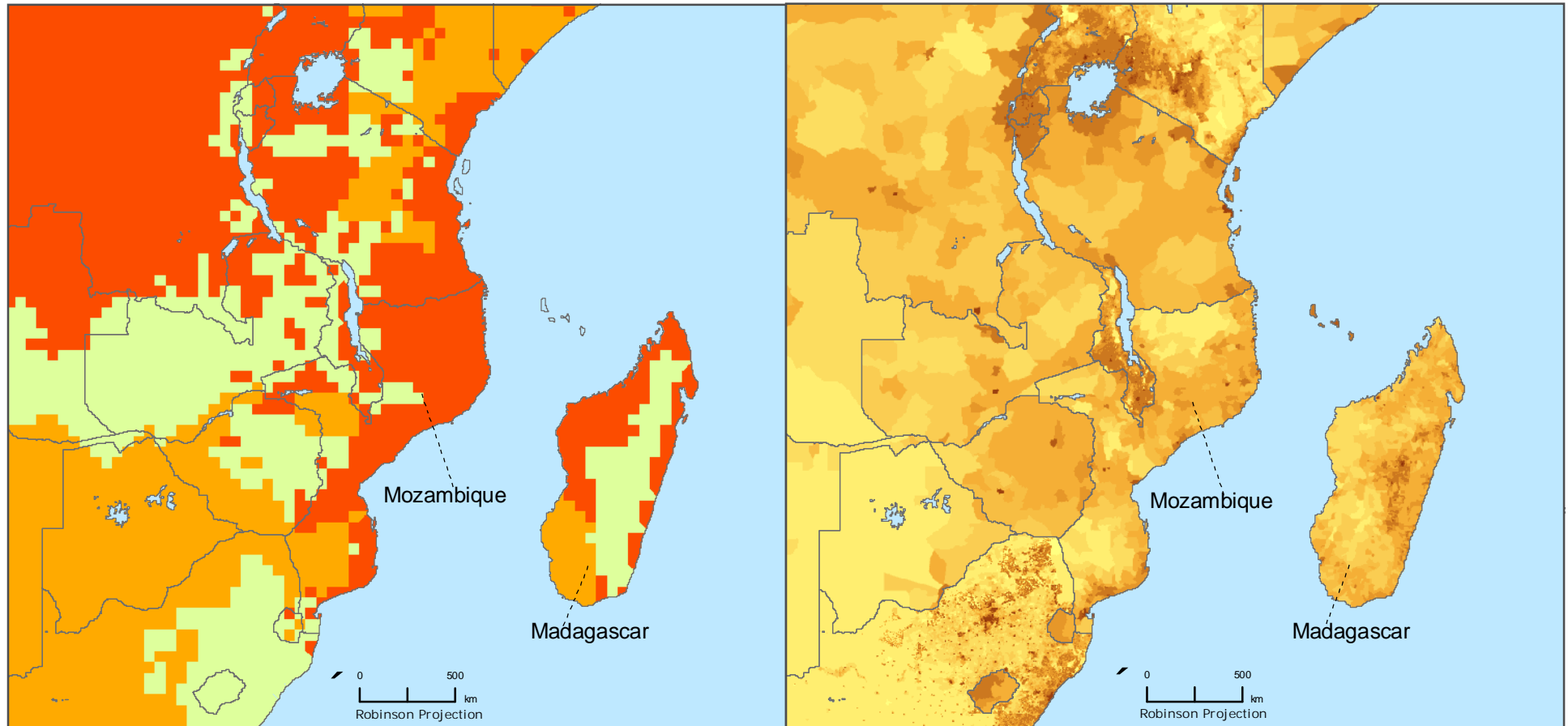


# Generalized Climate Zones \ GPW v3 Population Density

Southeastern Africa & Madagascar



## Generalized Climate Zones

- Tropical
- Dry\Desert
- Temperate
- Cold
- Polar\Tundra



## Population Density

- 0 Persons \ Sq.Km
- 0-2 Persons \ Sq.Km
- 2-5 Persons \ Sq.Km
- 5-10 Persons \ Sq.Km
- 10-15 Persons \ Sq.Km
- 15- 50 Persons \ Sq.Km
- 50- 100 Persons \ Sq.Km
- 100- 500 Persons \ Sq.Km
- 500- 1000 Persons \ Sq.Km
- 1000- 10000 Persons \ Sq.Km
- 10000- 50000 Persons \ Sq.Km
- > 50000 Persons \ Sq.Km



Copyright 2007. The Trustees of Columbia University in the City of New York.  
 Source: Center for International Earth Science Information Network (CIESIN).  
 Columbia University. Population, Landscape, and Climate Estimates (PLACE).  
 Further information available at: <http://sedac.ciesin.columbia.edu/place/>



Publish Date: 03/19/07



This document is licensed under a  
 Creative Commons 2.5 Attribution License  
<http://creativecommons.org/licenses/by/2.5/>