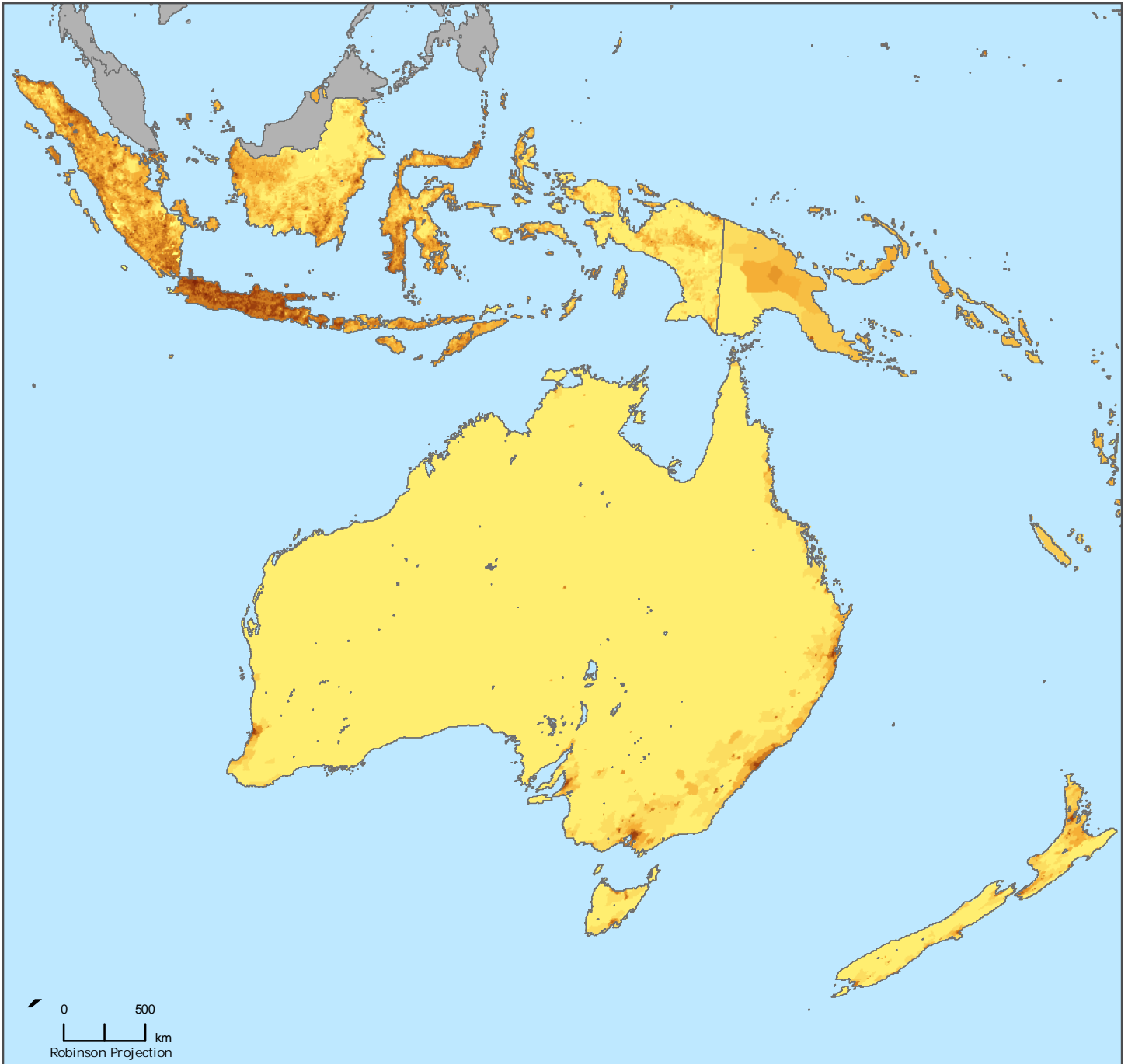
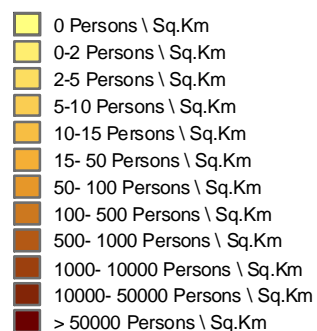


Population Density

Oceania



Population Density 2000



Population density (persons per square kilometer) layers, for 1990 and 2000 were created by dividing the 1990 and 2000 UN-adjusted population (POP) count grids by the land area (LA) grid. The resulting grid layers, one each for 1990 and 2000, were then aggregated to match the 12 population density classes. Source information: <http://sedac.ciesin.columbia.edu/gpw/>.



Copyright 2007. The Trustees of Columbia University in the City of New York.
Source: Center for International Earth Science Information Network (CIESIN).
Columbia University, Population, Landscape, and Climate Estimates (PLACE).
Further information available at: <http://sedac.ciesin.columbia.edu/place/>



This document is licensed under a
Creative Commons 2.5 Attribution License
<http://creativecommons.org/licenses/by/2.5/>

Publish Date: 03/13/07