

Biodiversity Hotspot Analysis Using Diversidad Software

A Background Document In Preparation of the Laguna Merin Workshop

November 2003

By

Richard Podolsky, Ph.D.

31 Main St.

PO Box 732

Rockport, ME 04856-0732

Tel. +1-207-236-6198

podolsky@att.net

<http://www.richardpodolsky.com>

For

Alexander de Sherbinin, Ph.D.

Center for International Earth Science Information Network (CIESIN)

Earth Institute at Columbia University

P.O. Box 1000, Palisades, NY 10964 USA

Tel. +1-845-365-8936, Fax +1-845-365-8922

adesherbinin@ciesin.columbia.edu

CIESIN: www.ciesin.columbia.edu

Earth Institute: www.earth.columbia.edu

Diversidad Background

All else being equal, preserving a regions biodiversity (its genetic and evolutionary capital), is paramount to the sustainability of both human and wild populations. This is especially true at a time when the direct and indirect effects of humans on the biosphere is increasing at an alarming rate.

The first step in preserving biodiversity is be able to speak with authority on where the biodiversity resides in the biosphere. Like other ecological phenomena such as species and habitats, biodiversity is not distributed uniformly in either space and time. Rather, biodiversity is clumped and organized into “hotspots” and these hotspots can operate at different scales of organization from the global (such as equatorial rainforests), to the local (such as habitat edges and ecotones).

While biodiversity preservation is arguably among the most important tasks facing ecologists, a great irony is that identifying the location of biodiversity hotspots is among the most expensive, (both monetarily and intellectually), activities that ecologists can undertake. Great expense can be incurred during intensive field surveys and the taxonomic expertise required across diverse assemblages of species can be daunting. For this reason, any method that can help to identify biodiversity hotspots faster, better, cheaper, would be welcome.

Diversidad is a software tool developed for ecologists and land managers that automatically identifies candidate biodiversity hotspots by filtering digital earth images and automatically identifying those sub-regions with the greatest pixel-class richness.

How Diversidad Works

Algorithmically, Diversidad uses the same information theory models, (pioneered by information scientist Claude Shannon (Shannon and Weaver (1949)), that ecologists use to measure diversity within ecological communities. In these ecological applications taxonomic surveys are conducted where two types of biological data are gathered at a site; the number of species and the number of individuals per species. Those sites with the greatest number of species **and** the most equitable distribution of individuals within a species; are considered to be more biodiverse and more heterogeneous than homogeneous sites with few species and where one species is numerically dominant over other species.

In Diversidad, field sites are replaced by sub-regions of a digital earth image and biological species are replaced by pixel color classes. In Diversidad, those sub-regions of the image with the greatest number of pixel color classes **and** the most equitable numerical distribution of pixels within a color class, are considered to be more information-rich regions.

In both applications of the model, heterogeneity is favored over homogeneity. Diversidad further hypothesizes that information rich regions of the image will prove to be field sites with high biological richness. This leap of faith is based on the underlying assumption of Diversidad that ***pixel heterogeneity is a reasonable surrogate for ecological diversity***. Field validation projects have supported this assumption (see references to Podolsky and Freilich in Appendix A).

Diversidad is a four step process as follows:

Step 1 - Diversidad computes the **diversity - H'** of a image region. To do so, users specify the size of the sampling grid for this computation. Grid size can be between 9 and 900 pixels (pixel radii of from 1-15).

Step 2 - Diversidad calculates the **theoretical maximum diversity - Hmax**. **Hmax** is just that, the richness a region of an image would have if diversity was as high as possible.

Step 3 - Diversidad computes the **percent of maximum diversity - PD** achieved for all the sampled pixels.

Step 4 - Diversidad renders a new 100-level gray scale image where black represents those pixels whose grid sample regions achieved 100 percent of maximum diversity, white represents those regions whose samples had 0 percent of maximum diversity and all 98 gray values of gray in between their corresponding percent of maximum diversity. In this way, the dark gray to black regions of the Diversidad image correspond to information hotspots and the light gray to white correspond to regions with relatively low information content.

The mathematical models that Diversidad uses are familiar to most ecologists and are derived from the work of Shannon and Weaver (1949). The three models used in Diversidad are: Diversity (H'), Maximum Diversity (Hmax) and Percent of Maximum Diversity (PD). These variables are calculated as follows:

1. **Diversity:** $H' = - \sum(pi \cdot \ln pi)$

Where $pi = p/s$


pi = proportion of color i of total of pixels in the sample grid

p = total number of pixels of color i

s = total number of pixels in the sample grid

2. **Maximum Diversity:** $H_{max} = -s(p/s \cdot \ln p/s) = -\ln (1/s)$

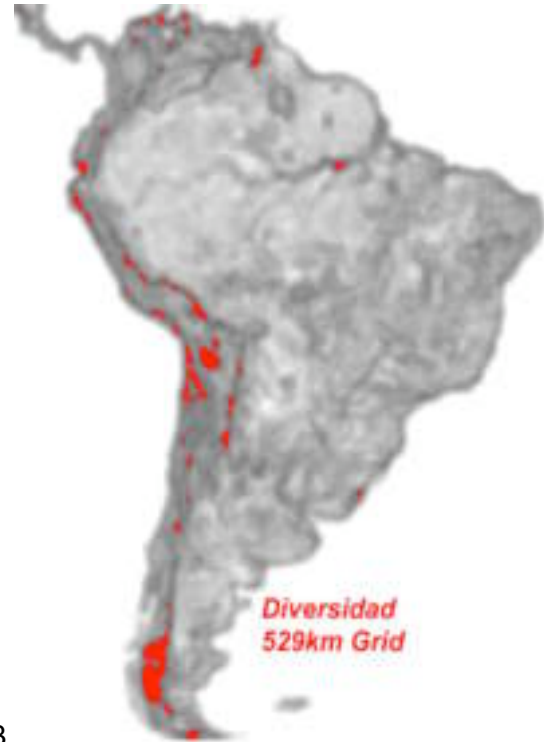
3. **Percent of Maximum Diversity:** $PD = H' / H_{max} \cdot 100$

<p>The sample grid below contains a total of 121 pixels of 14 colors. As such, it achieves 73.5% of its maximum possible diversity (1.94 / 2.64 x 100).</p> 	<table border="1"> <thead> <tr> <th>Color</th> <th>pi</th> <th>Pixels</th> <th></th> </tr> </thead> <tbody> <tr><td>0</td><td>0.43</td><td>52</td><td></td></tr> <tr><td>1</td><td>0.41</td><td>5</td><td></td></tr> <tr><td>2</td><td>0.33</td><td>4</td><td></td></tr> <tr><td>3</td><td>0.50</td><td>6</td><td></td></tr> <tr><td>4</td><td>1.30</td><td>16</td><td></td></tr> <tr><td>5</td><td>0.33</td><td>4</td><td></td></tr> <tr><td>6</td><td>0.17</td><td>2</td><td></td></tr> <tr><td>7</td><td>1.20</td><td>15</td><td>$H' = 1.94$</td></tr> <tr><td>8</td><td>0.08</td><td>1</td><td>$H_{max} = 2.64$</td></tr> <tr><td>9</td><td>0.08</td><td>1</td><td>$PD = 73.5\%$</td></tr> <tr><td>10</td><td>0.66</td><td>8</td><td></td></tr> <tr><td>11</td><td>0.17</td><td>2</td><td></td></tr> <tr><td>12</td><td>0.33</td><td>4</td><td></td></tr> <tr><td>13</td><td>0.08</td><td>1</td><td></td></tr> <tr> <td></td> <td>1.00</td> <td>s=121</td> <td></td> </tr> </tbody> </table>	Color	pi	Pixels		0	0.43	52		1	0.41	5		2	0.33	4		3	0.50	6		4	1.30	16		5	0.33	4		6	0.17	2		7	1.20	15	$H' = 1.94$	8	0.08	1	$H_{max} = 2.64$	9	0.08	1	$PD = 73.5\%$	10	0.66	8		11	0.17	2		12	0.33	4		13	0.08	1			1.00	s=121	
Color	pi	Pixels																																																															
0	0.43	52																																																															
1	0.41	5																																																															
2	0.33	4																																																															
3	0.50	6																																																															
4	1.30	16																																																															
5	0.33	4																																																															
6	0.17	2																																																															
7	1.20	15	$H' = 1.94$																																																														
8	0.08	1	$H_{max} = 2.64$																																																														
9	0.08	1	$PD = 73.5\%$																																																														
10	0.66	8																																																															
11	0.17	2																																																															
12	0.33	4																																																															
13	0.08	1																																																															
	1.00	s=121																																																															

Example Analysis – Continent Scale Application

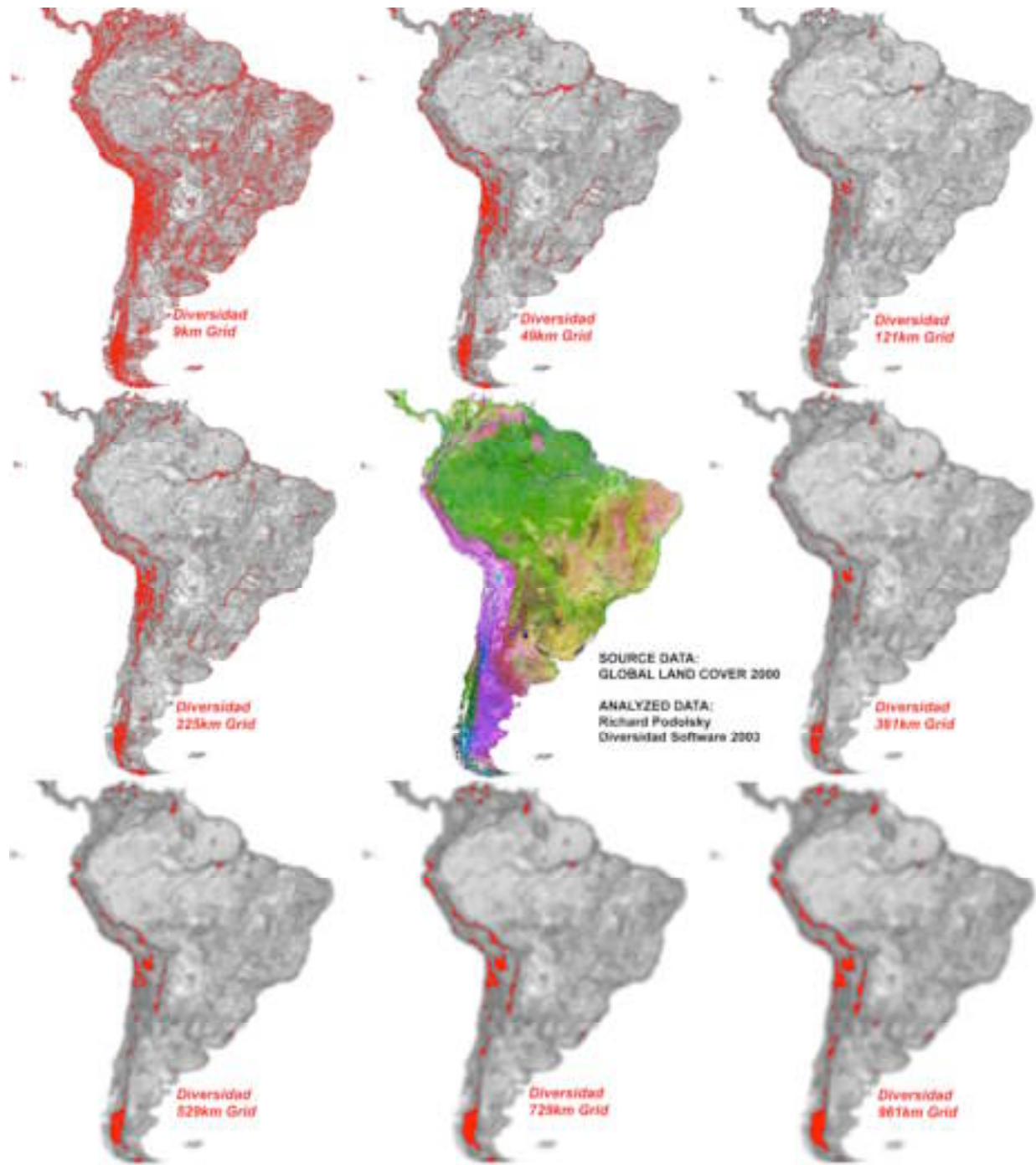
The two sample images below demonstrate the process whereby a raw (GLC 2000) image (A.) is processed by Diversidad to produce a Diversidad image (B.). In this example, the darkest regions of the Diversidad image that represent those pixels whose grids yielded values of PD of 75% or greater have been colored red. Lake Merin is the southern and eastern most red spot.

A.



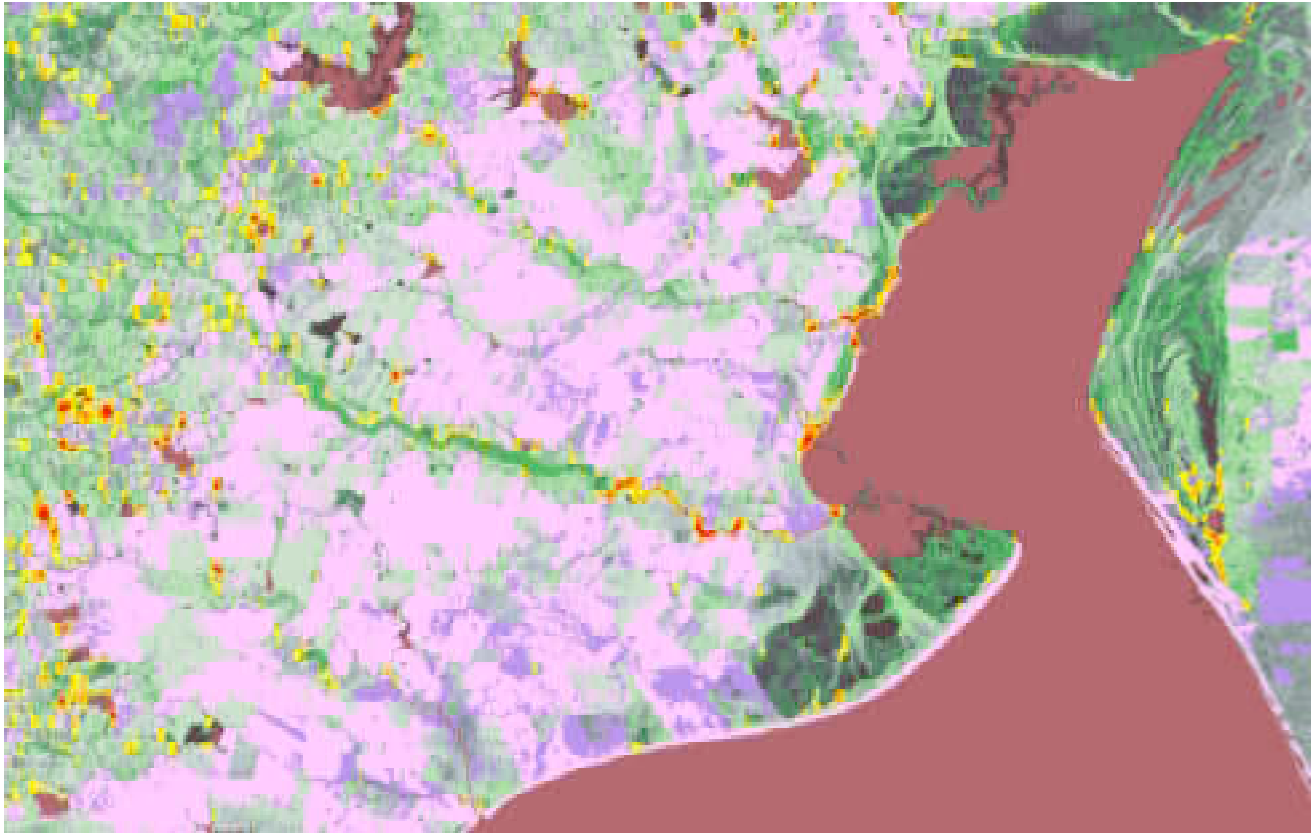
B.

The poster on the follow page is a montage showing 8 Diversidad images surrounding the raw GLC 2000 image. In clockwise progression around the central image, each Diversidad image represents a larger sampling grid size from 9km to 961km.



Example Analysis – Regional Scale Application

In the image of the northern end of Lake Merin, Diversidad hotspots have been overlaid on to the thematic vegetation map. Yellow corresponds with regions where PD was between 75 and 79 percent, orange regions are where PD was between 80 and 84 percent, and red regions are those with PD values equal to or greater than 85 percent.



Selected Bibliography

These following references cover the topic of landscape and ecosystem metrics in general. Those that have an asterisk (*) by them, I have found to particularly relevant to Diversidad.

Allnutt, T.F., W.W. Wettengel, J.V. Reyna, R.C. de Leon Garcia, E.E. Inigo Elias, and D.M. Olson. 2002. The efficacy of TM satellite imagery for rapid assessment of Chihuahuan xeric habitat intactness for ecoregion-scale conservation planning. *Journal of Arid Environments*, 52: 135-153.

Antonucci, J., GIS: A Guide to the Technology, New York: Von Nostrand Reinhold, 1991.

* Askins, R. A., and M. J. Philbrick. 1987. Effect of changes in regional forest abundance on the decline and recovery of a forest bird community. *Wilson Bull.* 99:7-21.

Burkey, T. V. 1989. Extinction in nature reserves: the effect of fragmentation and the importance of migration between reserve fragments. *Oikos* 55:75-81.

Burrough, P. A. 1986. Principles of Geographical Information Systems for Resources Assessment. Clarendon Press, Oxford.

Campbell, J.B., 1987. Introduction to Remote Sensing. The Guilford Press, New York, 551 pp.

Carew-Reid, J. et al. 1994. Strategies for national sustainable development: A handbook for their planning and implementation. IIED and IUCN.

Congalton, R.G. 1991. A review of assessing the accuracy of classifications of remotely sensed data. *Remote Sensing of the Environment* 37:35-46.

* Debinski, D.M., K. Kindscher, M.E. Jakubauskas. 1999. A remote sensing and GIS-based model of habitats and biodiversity in the Greater Yellowstone Ecosystem. *International Journal of Remote Sensing*, 20 (17): 3281-3291.

De Maeyer, P., P. Bogaert, J. De Man, L. De Temmerman, R. Gamanya, k M. Binard, and F. Muller. 2002. Cartography and land use change of World Heritage areas and the benefits of remote sensing and GIS for conservation. Paper presented at the Conference on Space Applications for Heritage Conservation, Strasbourg, France, November 5-8, 2002.

* de Sherbinin, A., K. Kline, and K. Raustiala. 2002a. Remote Sensing Data: Valuable Support for Environmental Treaties. *Environment*, January/February 2002.

* de Sherbinin, A., D. Balk, K. Jaeger, M. Jaiteh, F. Pozzi, and C. Giri. 2002b. Social Science Applications of Remote Sensing, *A CIESIN Thematic Guide*, available online at http://sedac.ciesin.columbia.edu/tg/guide_main.jsp (accessed on February 28, 2003).

* Dickman, C. R. 1987. Habitat fragmentation and vertebrate species richness in an urban environment. *J. Appl. Ecol.* 24:337-351.

Dunning, J. B., B. J. Danielson, and H. R. Pulliam. 1992. Ecological processes that affect populations in complex landscapes. *Oikos* 65:169-175.

Edwards, T.C., G.G. Moisen, and D.R. Cutler. 1998. Assessing map accuracy in a remotely sensed, ecoregion-scale cover map. *Remote Sensing of the Environment*, 63: 73-83.

Edwards, T.C., J.M. Scott, C.G. Homer, and R.D. Ramsey. 1993. Gap analysis: a geographic approach for assessing national biological diversity. *Natural Reserve Environmental Issues*, 2: 65-72.

Foin, T.C., S.P.D. Riley, A.L. Pawley, D.R. Ayres, T.M. Carlsen, P.J. Hodum and P.V. Switzer. 1998. Improving recovery planning for threatened and endangered species: comparative analysis of recovery plans can contribute to more effective recovery planning. *BioScience* 48(3): 177-184.

* Forman, R. T. T., and M. Godron. 1986. Landscape Ecology. John Wiley & Sons, New York. 619 pp.

* Franklin, J. F., and R. T. T. Forman. 1987. Creating landscape pattern by forest cutting: ecological consequences and principles. *Landscape Ecology* 1:5-18.

Ganzin, N., and M. Mulama. 2002. Evaluation of forage resources in semi-arid savannah environments with satellite imagery and the contribution to the management of protected areas: A

case study on the Nakuru National Park in Kenya. Paper presented at the Conference on Space Applications for Heritage Conservation, Strasbourg, France, November 5-8, 2002.

* Glowka, L. et al. 1994. A guide to the Convention on Biological Diversity. IUCN Environmental Policy and Law Paper No. 30. IUCN, Gland, Switzerland and Cambridge, UK

Graham, R. L. 1988. Indices of landscape pattern. *Landscape Ecology* 1:153-162.

* Griffiths, G.H., J. Lee, and B.C. Eversham. 2000. Landscape pattern and species richness; regional scale analysis from remote sensing. *International Journal of Remote Sensing*, 21 (13-14): 2685-2704.

Gustafson, E. J., and G. R. Parker. 1992. Relationships between landcover proportion and indices of landscape spatial pattern. *Landscape Ecology* 7:101-110.

Hansen, A., and F. di Castri (eds). 1992. *Landscape Boundaries*. Springer, New York.

* Harris, L. D. 1984. *The Fragmented Forest: Island Biogeographic Theory and the Preservation of Biotic Diversity*. University of Chicago Press, Chicago. 211 pp.

Holling, C. S. 1992. Cross-scale morphology, geometry and dynamics of ecosystems. *Ecological Monographs* 62:447-502.

* Innes, J.L. and B. Koch. 1998. Forest Biodiversity and its assessment by remote sensing. *Global Ecology and Biogeography Letters*, 7: 397-419.

Jensen, J.R. 1986. *Introductory Digital Image Processing: A Remote Sensing Perspective*. Prentice-Hall Publishing Co., Engelwood Cliffs, New Jersey.

Jakubauskas, M.E., and K.P. Price. 1997. Empirical relationships between structural and spectral factors of Yellowstone Lodgepole Pine forests. *Photogrammetric Engineering and Remote Sensing*, 63, 1375-1381.

* Kareiva, P. 1990. Population dynamics in spatially complex environments: theory and data. *Phil. Trans. R. Soc. Lond. B* 330:175-190.

Karr, J. R. 1994. Landscapes and management for ecological integrity. Pages 229-251 in K. C. Kim and R. D. Weaver (eds), *Biodiversity and landscape: a paradox for humanity*. Cambridge University Press, New York.

Klijn, F. and H. A. Udo de Haes. 1994. A hierarchical approach to ecosystems and its applications for ecological land classification. *Landscape Ecology* 9:89-104.

* Kolasa, J., and C. D. Rollo. 1991. Introduction: The heterogeneity of heterogeneity: a glossary. Pages 1-23, In J. Kolasa and S. T. A. Pickett, eds., *Ecological Heterogeneity*. Springer-Verlag, New York.

* Kotliar, N. B., and J. A. Wiens. 1990. Multiple scales of patchiness and patch structure: a hierarchical framework for the study of heterogeneity. *Oikos* 59:253-260.

* Leduc, A., Y. T. Prairie, and Y. Bergeron. 1994. Fractal dimension estimates of a fragmented landscape: sources of variability. *Landscape Ecology* 9:279-286.

Lillesand, T.M., R. W. Kiefer 1987. Remote Sensing and Image Interpretation, 2nd ed. Wiley, New York.

Liu, J., M. Linderman, Z. Ouyang, L. An, J. Yang and H. Zhang. 2001. Ecological Degradation in Protected Area: The Case of the Wolong Nature Reserve for Giant Pandas. *Science*, 292: 98-101.

Logan, W., E. R. Brown, D. Longrie, G. Herb, and R. A. Corthell. 1985. Edges. Pages 115-127; In, E. R. Brown, tech. ed. Management of wildlife and fish habitats in forests of western Oregon and Washington. USDA For. Serv. Publ. No. R6-F&WL-192-1985.

Luoto, M., T. Toivonen, R.K. Heikkinen. 2002. Prediction of total and rare plant species richness in agricultural landscapes from satellite images and topographic data. *Landscape Ecology*, 17: 195-217.

MacArthur, R. H., and E. O. Wilson. 1967. The Theory of Island Biogeography. Princeton University Press, Princeton. 203 pp.

* Mack, E.L., L.G. Firbank, P.E. Bellamy, S.A. Hinsley, and N. Veitch. 1997. The comparison of remotely sensed and ground-based habitat area data using species-area models. *Journal of Applied Ecology*, 34: 1222-1228.

Mandelbrot, B. B. 1982. The Fractal Geometry of Nature. W. H. Freeman and Co., New York.

Millington, A.C., X.M. Velez-Liendo, and A.V. Bradley. 2003. Scale dependence in multitemporal mapping of forest fragmentation in Bolivia: implications for explaining temporal trends in landscape ecology and applications to biodiversity conservation. *Photogrammetry & Remote Sensing*, 57:289-299.

Nagendra, H. 2001. Using remote sensing to assess biodiversity. *International Journal of Remote Sensing*, 22 (12): 2377-2400.

Nagendra, H., and M. Gadgil. 1999. Biodiversity assessment at multiple scales: Linking remotely sensed data with field information. *Proceedings of the National Academy of Sciences*, 96 (16): 9154-9158.

Nohr, H. and A.F. Jorgensen. 1997. Mapping of biological diversity in Sahel by means of satellite image analyses and ornithological surveys. *Biodiversity and Conservation*, 6 (4): 545-566.

Patton, D. R. 1975. A diversity index for quantifying habitat "edge". *Wildl. Soc. Bull.* 3:171-173.

Peet, R.K. 1974. The measurement of species diversity. *Annual Review of Ecology and Systematics* 5:285-307.

Pickett, S. T. A., and P. S. White eds. 1985. The Ecology of Natural Disturbances and Patch Dynamics. Academic Press, Orlando, FL.

* Pickett, S. T. A. and M.L. Cadenasso. 1995. Landscape Ecology: Spatial Heterogeneity in ecological systems. *Science* 269: 331-334.

* Pielou, E. C. 1975. Ecological Diversity. Wiley-Interscience, New York.

* Podolsky, R. 2003. Diversidad Software v. 2.0. Online: <http://home.att.net/~podolsky/divcov.htm>

* Podolsky, R. 1995. Biodiversity Prospecting from Digital Earth Imagery. *Diversity Magazine*, 11 (4): 16-17.

Podolsky, R., and P. Conkling. 1992. GAIA (Geographic Access, Information and Analysis) Software. The Island Institute, Maine.

* Podolsky, R. 1994. Ecological Hot Spots: A Method for Estimating Biodiversity Directly from Digital Earth Imagery. *Earth Observation Magazine*, June 1994, pp 30-36.

Podolsky, R. 1992. Remote sensing, geographic data and the conservation of biological resources. *Endangered Species Update*, Vol. 9, No. 12. Ann Arbor, Michigan.

* Podolsky, R., J. Freilich & R. Knehr. 1992. Predicting plant species richness from remotely sensed data in a high desert ecosystem. 1992 ISPRS/ASPRS Global Change Conference Proceedings, Washington, DC.

Podolsky, R.H. 1990. Monitoring biodiversity and landscape richness through digital earth imagery. International Society for Photogrammetry and Remote Sensing Commission VII Symposium, "Global and Environmental Monitoring: Techniques and Impacts," Vancouver, BC.

Rabeil, T., C. Mering, and R. Ramousse. 2002. Using GIS and remote sensing in the management of the protected areas in West Africa: the example of the W national park in Niger. Paper presented at the Conference on Space Applications for Heritage Conservation, Strasbourg, France, November 5-8, 2002.

Ranney, J. W., M. C. Bruner, and J. B. Levenson. 1981. The importance of edge in the structure and dynamics of forest islands. Pages 67-94 ; In, R. L. Burgess and D. M. Sharpe, eds. *Forest Island Dynamics in Man-Dominated Landscapes*. Springer-Verlag, New York.

Reid, W. V., S. A. Laird, C. A. Meyer, R. Gámez, A. Sittenfeld, D. H. Janzen, M. A. Gollin, & C. Juma 1993. Biodiversity Prospecting: Using Genetic Resources for Sustainable Development. World Resources Institute Publications, Baltimore. 341 pp.

Ripple, W.J. 1994. Remote Sensing and GIS application for forest ecosystem analysis. ASPRS Conference Paper. Online: <http://spatialodyssey.ursus.maine.edu/gisweb/spatdb/acsm/ac94061.html> (accessed on February 15, 2003).

Ripple, W. J., G. A. Bradshaw, and T. A. Spies. 1991. Measuring landscape pattern in the Cascade Range of Oregon, USA. *Biological Conserv.* 57:73-88.

* Romme, W. H. 1982. Fire and landscape diversity in subalpine forests of Yellowstone National Park. *Ecol. Monogr.* 52:199-221.

Roy, P.S. and Sanjay Tomar. 2000. Biodiversity characterization at landscape level using geospatial modeling technique. *Biological Conservation*, 95: 95-109.

Ruiz Moreno, D.H., P. Frederico, G.A. Canziani. 2002. Population Dynamics Models Based on Cellular Automata that includes Habitat Quality Indices Defined through Remote Sensing. *Proceedings of the 29th Conference of the International Society for Remote Sensing of the Environment*, Buenos Aires, April 2002.

Sader, S.A., D.J. Hayes, J.A. Hepinstall, M. Coan and C. Soza. 2001. Forest change monitoring of a remote biosphere reserve. *International Journal of Remote Sensing*, 22(10):1937-1950.

Saveraid, E.H., D.M. Debinski, K. Kindscher, and M.E. Jakubauskas. 2001. A comparison of satellite data and landscape variables in predicting bird species occurrences in the Greater Yellowstone Ecosystem, USA. *Landscape Ecology*, 16: 71-83.

Saxon, E.C. 1983. Mapping the habitats of rare animals in the Tanami Wildlife Sanctuary (central Australia): An application of satellite imagery. *Biological Conservation*, 27(2): 243-257.

Sayre, R., E. Roca, G. Segahatkish, B. Young, S. Keel, R. Roca, and S. Sheppard. 2000. *Nature in Focus: Rapid Ecological Assessment*. Washington, DC: Island Press and the Nature Conservancy.

Scott, J.M., et al 1987. Species Richness: A geographical approach to protecting future biological diversity. *BioScience* Vol. 37, No. 11, pp. 782-788.

Shannon, C.E., and W. Weaver. 1949. *The Mathematical Theory of Communication*. Urbana: The University of Illinois Press.

Simpson, E. H. 1949. Measurement of diversity. *Nature* 163:688.

Skole, D., and C. Tucker. 1993. Tropical deforestation and habitat fragmentation in the Amazon: Satellite data from 1978 to 1988. *Science*, 260: 1905-09.

Snedecor, G.W. and W.F. Cochran, 1967. *Statistical Methods*. Iowa State University Press, Ames, Iowa, 593 pp.

Stoms, D.M. and J. E. Estes. 1993. A remote sensing research agenda for mapping and monitoring biodiversity. *International Journal of Remote Sensing*, 14:1939-1860.

Suffling, R. et al 1988. Control of landscape diversity by catastrophic disturbance: a theory and a case study of fire in a Canadian boreal forest. *Environ. Manag.* Vol. 12, No. 1, pp. 73-78.

Tamura, M. and H. Higuchi. 2000. Satellite observation of migration routes and habitats of migratory birds in wetlands in East Asia. Pages 11-14 in *Proceedings of the Asian Conference on Remote Sensing XXI*, 4-8 December 2000. Taipei, Taiwan.

Temple, S. A. 1986. Predicting impacts of habitat fragmentation on forest birds: a comparison of two models. Pages 301-304; In, J. Verner, M. L. Morrison, and C. J. Ralph, eds. *Wildlife 2000: Modeling Habitat Relationships of Terrestrial Vertebrates*. Univ. of Wisconsin Press, Madison, WI.

Terborgh, J. 1989. *Where Have all the Birds Gone?* Princeton University Press, New Jersey. 207 pp.

Turner, M. G. 1990a. Spatial and temporal analysis of landscape patterns. *Landscape Ecology* 4:21-30.

Turner, M. G. 1989. Landscape ecology: the effect of pattern on process. *Annu. Rev. Ecol. Syst.* 20:171-197.

Turner, M. G., and R. H. Gardner (eds). 1991. *Quantitative Methods in Landscape Ecology*. Springer, New York.

Turner, M. G., R. V. O'Neill, R. H. Gardner, and B. T. Milne. 1989. Effects of changing spatial scale on the analysis of landscape pattern. *Landscape Ecology* 3:153-162.

Turner, A.M., J.D. Heyland, and H. Epp. 1995. "Remote Sensing for Wildlife Habitat: Past Achievements and Future Challenges." In: *The Canadian Remote Sensing Contribution to Understanding Global Change*, Department of Geography Publication Series, No. 3, University of Waterloo.

Turner, W., E.J. Sterling, and A.C. Janetos. 2001. Special Section: Remote Sensing and Biodiversity Conservation. *Conservation Biology*, 15(4): 832-834.

Urban, D. L., R. V. O'Neill, and H. H. Shugart, Jr. 1987. Landscape ecology: A hierarchical perspective can help scientist understand spatial patterns. *BioScience* 37:119-127.

Verlinden, A., and R. Masogo. 1997. Satellite remote sensing of habitat suitability for ungulates and ostrich in the Kalahari of Botswana. *Journal of Arid Environment*, 35: 563-574.

Wiens, J. A. 1989a. Spatial scaling in ecology. *Functional Ecol.* 3:385-397.

Wiens, J. A., C. S. Crawford, and J. R. Gosz. 1985. Boundary dynamics: a conceptual framework for studying landscape ecosystems. *Oikos* 45: 421-427.

Wiens, J. A., and B. T. Milne. 1989. Scaling of 'landscapes' in landscape ecology, or, landscape ecology from a beetle's perspective. *Landscape Ecology* 3:87-96.

World Resources Institute. 1995. National Biodiversity Planning: Guidelines based on early experiences around the world. World Resources Institute in collaboration with UNEP and IUCN.