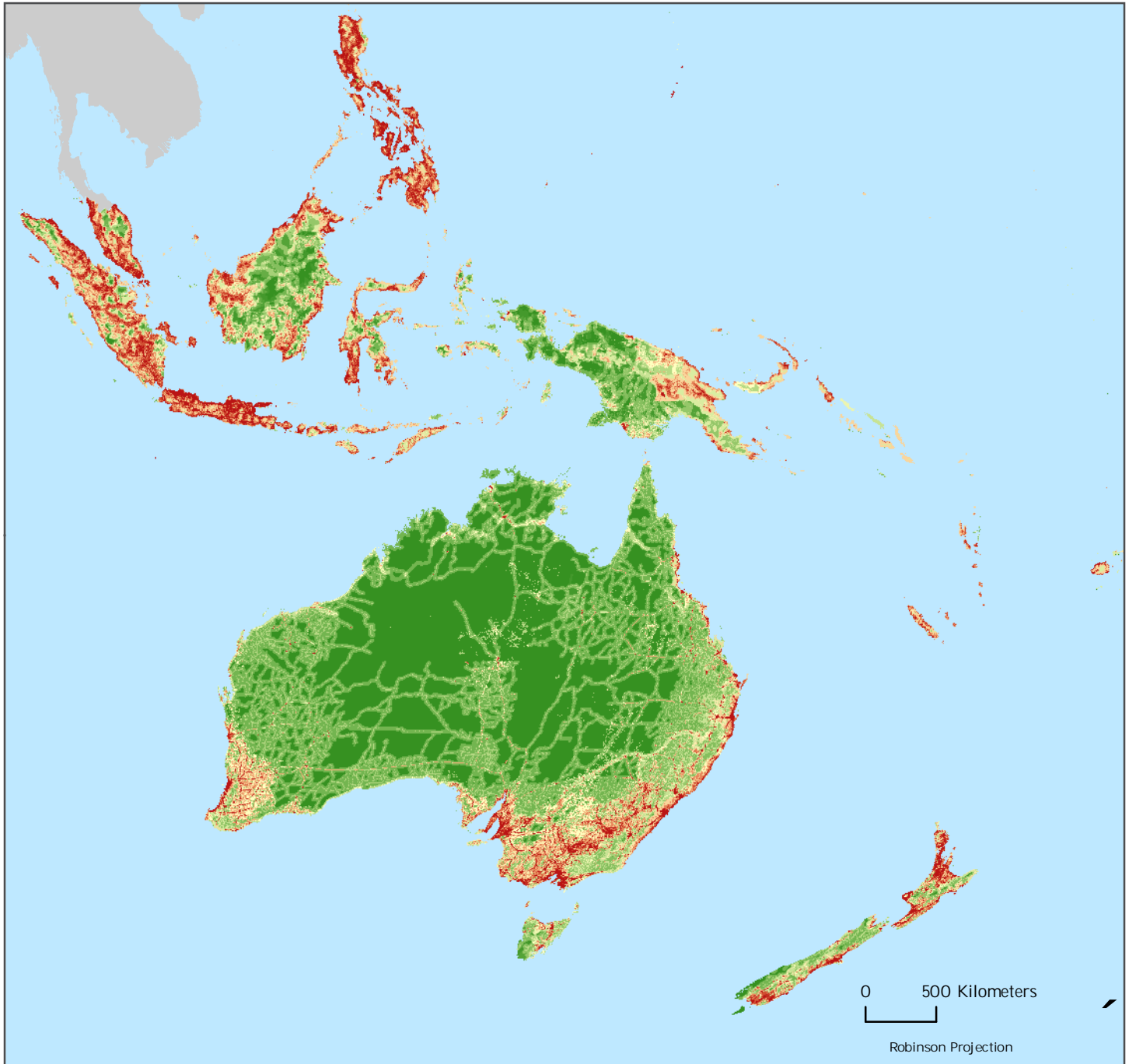


The Human Influence Index ver. 2

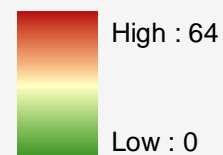
Oceania



The Human Influence Index

The Human Influence Index (HII) is a measure of direct human influence on terrestrial ecosystems using the best available data sets on human settlement (population density, built-up areas), access (roads, railroads, navigable rivers, coastline), landscape transformation (land use/land cover) and electric power infrastructure (nighttime lights). HII values range from 0 to 64. Zero value represents no human influence and 64 represents maximum human influence possible using all 8 measures of human presence.

Human Influence Index



Copyright 2008. The Trustees of Columbia University in the City of New York.
Source: Center for International Earth Science Information Network (CIESIN), Columbia University and Wildlife Conservation Society, the Bronx Zoo, New York. The Last of the Wild Data set. Available at <http://www.sedac.ciesin.columbia.edu/wildareas>

Publication Date: 03/07/08



This document is licensed under a
Creative Commons 2.5 Attribution License
<http://creativecommons.org/licenses/by/2.5/>