

DATA & APPLICATIONS ONLINE

Marine and Coastal

Overview

The NASA Socioeconomic Data and Applications Center (SEDAC) offers a variety of data sets on marine and coastal regions and sea level rise. Data and maps are available for download at

sedac.ciesin.columbia.edu/theme/marine-and-coastal.

Selected Data

Low Elevation Coastal Zone (LECZ) Population Estimates provides country-level estimates of the world's urban and rural populations located in the LECZ—all areas below 10 m elevation—for 1990, 2000, 2010, and 2100.

Indicators of Coastal Water Quality consists of a gridded data set of chlorophyll-a concentrations derived from NASA SeaWiFS satellite measurements, to identify trends 1998–2007; a tabular time series; and ancillary data.

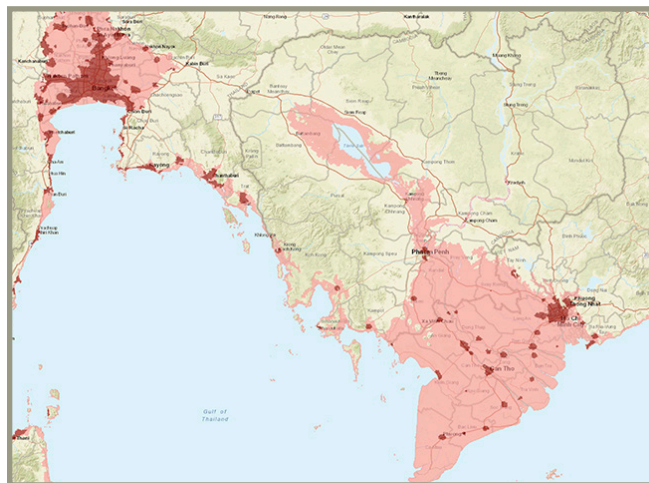
Global Mangroves Forests Distribution is a database describing the extent of mangrove forests for the year 2000, at 30 m spatial resolution.

Sea Level Rise Impacts on Ramsar Wetlands of International Importance assesses the area and percent area likely to become inundated under 1- and 2 m sea level rise scenarios, for 613 sites.

U.S. Social Vulnerability Index (SVI) Grids uses census data for 2000, 2010, 2014, 2016, and 2018, under themes of Socioeconomic, Household Composition/Disability, Minority Status/Language, and Housing Type/Transportation, to rank communities on vulnerability, for the entire U.S.

Environmental Performance Index (EPI) biennially assesses country performance of environmental goals. The 2020 EPI uses 32 performance indicators across 11 issue categories, including fisheries and water resources, to compare 180 countries.

Compendium of Environmental Sustainability Indicators is a compilation of six indicator collections, incorporating multiple country codes and condensing descriptions into a companion metadata database.



(AR5) Fifth Assessment Report Observed Climate Change Impacts is the latest of seven iterative data sets (including IPCC Emissions Scenarios) with observed responses to climate change across a wide range of systems and regions.

Mapping Resources

The **SEDAC Map Viewer** enables visualization of all SEDAC data set map layers, organized by approximately 15 interdisciplinary topics, with an innovative four-window map view option. Also perform simple to advanced visualizations and analysis via **SEDAC Map Services**.



Socioeconomic Data and Applications Center (SEDAC)

CIESIN-The Earth Institute at Columbia University
Palisades, New York
sedac.ciesin.columbia.edu



EODIS DAACs

SEDAC is one of twelve NASA Earth Observing System Data and Information System (EODIS) Distributed Active Archive Centers (DAACs)